

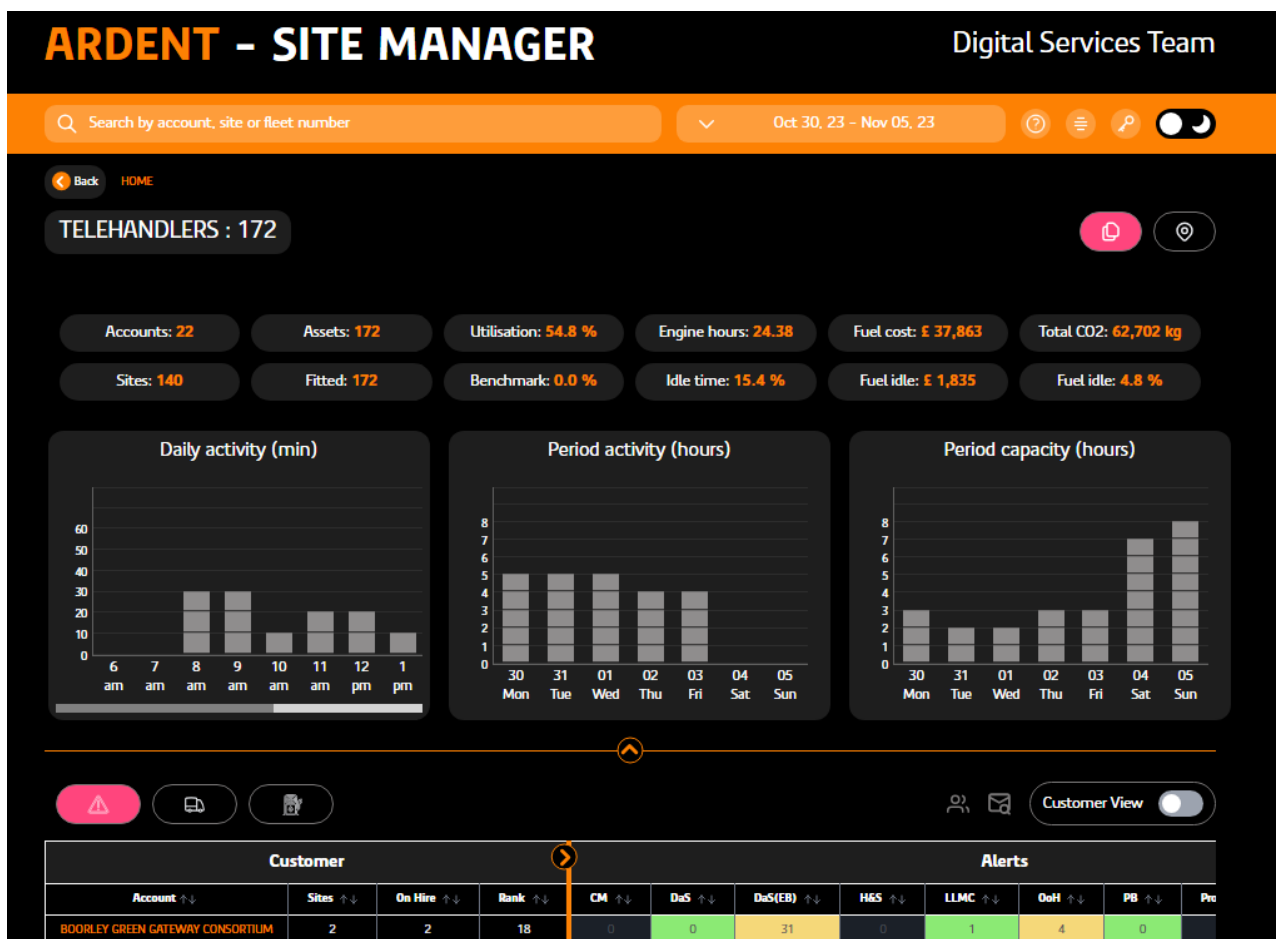
Site Manager v4.0.0 Release Notes

1. Introduction

Site Manager v4.0.0 introduces an all new design and skin which includes updated colour schemes, new icons, text colour and branding to give it a fresh new look. Also included is the ability to now run selected Analytics charts for our Smart Tanks.

2. New Design and Skin

- 2.1 Site Manager has now been brought in line with the design of our Fuel-IT platform which was released in January 2023. The functionality and navigation of the portal hasn't changed so it will be just as easy for users. If there are any icons a user is unsure of then they will be able to hover over it with their mouse cursor to see a tooltip. This new design also includes the option for a user to switch between light and dark mode.



3. Analytics Charts for Smart Tanks

- 3.1 There are now four charts available for Smart Tanks in our Analytics tool. You can run charts for CO2 dispensed, number of Critical fuel alerts, number of fill ups and litres dispensed.

Appendix: Site Manager v3.10.12 Alerts

Telehandlers				
Alert Type	Customer Level	User Level		User definable threshold setting
		Hot	Warm	
CheckMate	✓	✓	✓	✗
DPF regeneration	✓	✓	✓	✗
Driving at Speed	✓	✓	✓	✓
Fuel idling	✓	✗	✓	✓
Fuel theft	✓	✗	✓	✓
H&S	✓	✓	✓	✗
LLMC override	✓	✓	✓	✗
Low battery	✓	✓	✓	✓
Low utilisation	✓	✗	✓	✓
Movement alert	✓	✗	✓	✓
No use permitted	✓	✓	✓	✓
Out of hours	✓	✓	✓	✓
Parking brake	✓	✓	✓	✗
Punctures	✓	✗	✓	✓
Seatbelt not worn	✓	✓	✓	✓
Seatbelt Moving	✓	✓	✓	✗
Time in reverse	✓	✗	✓	✓
Travelling with boom in air at speed	✓	✓	✓	✗
Water-in-fuel	✓	✓	✓	✗

MEWPS				
Alert Type	Customer Level	User Level		User definable threshold setting
		Hot	Warm	
CheckMate	✓	✓	✓	✗
Basket angle	✓	✓	✓	✗
Battery health	✓	✓	✓	✗
H&S (defect manager)	✓	✓	✓	✗
Entrapment (SIOPS)	✓	✓	✓	✓
Movement alert	✓	✗	✓	✓
No use permitted	✓	✓	✓	✓
Out of hours	✓	✓	✓	✓
Overload	✓	✓	✓	✗
Tilt	✓	✓	✓	✗
Low utilisation	✓	✗	✓	✓

<5T Dumpers				
Alert Type	Customer Level	User Level		User definable threshold setting
		Hot	Warm	
Low battery	✓	✓	✓	✓
CheckMate	✓	✓	✓	✗
Driving at Speed	✓	✓	✓	✓
Engine idling	✓	✗	✓	✓
H&S	✓	✓	✓	✗
Movement alert	✓	✗	✓	✓
No use permitted	✓	✓	✓	✓
Out of hours	✓	✓	✓	✓
Punctures	✓	✗	✓	✓
Seatbelt not worn	✓	✓	✓	✗
Seatbelt compromise	✓	✓	✓	✗
Low utilisation	✓	✗	✓	✓

>5T Dumpers				
Alert Type	Customer Level	User Level		User definable threshold setting
		Hot	Warm	
Blocked Air Filter	✓	✓	✓	✗
Low battery	✓	✓	✓	✓
Low engine coolant	✓	✓	✓	✗
CheckMate	✓	✓	✓	✗
Driving at Speed	✓	✓	✓	✓
Engine idling	✓	✗	✓	✓
H&S	✓	✓	✓	✗
Low oil level	✓	✓	✓	✗
Movement alert	✓	✗	✓	✓
No use permitted	✓	✓	✓	✓
Out of hours	✓	✓	✓	✓
Punctures	✓	✗	✓	✓
Seatbelt not worn	✓	✓	✓	✗
Seatbelt compromise	✓	✓	✓	✗
Low utilisation	✓	✗	✓	✓
Water-in-fuel	✓	✓	✓	✗

<9T Excavators				
Alert Type	Customer Level	User Level		User definable threshold setting
		Hot	Warm	
CheckMate	✓	✓	✓	✗
H&S	✓	✓	✓	✗
Movement alert	✓	✗	✓	✓
No use permitted	✓	✓	✓	✓
Out of hours	✓	✓	✓	✓
Low utilisation	✓	✗	✓	✓

>9T Excavators				
Alert Type	Customer Level	User Level		User definable threshold setting
		Hot	Warm	
CheckMate	✓	✗	✓	✗
H&S	✓	✗	✓	✗
Movement alert	✓	✗	✓	✓
No use permitted	✓	✗	✓	✓
Out of hours	✓	✗	✓	✓
Low utilisation	✓	✗	✓	✓

>9T Excavators (Advanced Telematics)				
Alert Type	Customer Level	User Level		User definable threshold setting
		Hot	Warm	
Low battery	✓	✓	✓	✓
DPF regeneration	✓	✓	✓	✗
CheckMate	✓	✓	✓	✗
H&S	✓	✓	✓	✗
Fuel Idle	✓	✗	✓	✓
Low oil level	✓	✓	✓	✗
Movement alert	✓	✗	✓	✓
No use permitted	✓	✓	✓	✓
Out of hours	✓	✓	✓	✓
Low utilisation	✓	✗	✓	✓
Water in fuel	✓	✓	✓	✗

Rollers				
Alert Type	Customer Level	User Level		User definable threshold setting
		Hot	Warm	
CheckMate	✓	✓	✓	✗
H&S	✓	✓	✓	✗
Movement alert	✓	✗	✓	✓
No use permitted	✓	✓	✓	✓
Out of hours	✓	✓	✓	✓
Low utilisation	✓	✗	✓	✓

Smart Tanks				
Alert Type	Customer Level	User Level		User definable threshold setting
		Hot	Warm	
Critical Fuel	✓	✓	✓	✓
Low Fuel	✓	✓	✓	✓
Fuel Theft	✓	✗	✓	✗
Out of hours	✓	✓	✓	✓
Tamper	✓	✓	✓	✗